

TACSI Mobility Aid Access Guide

We have created this guide to reduce stress when people visit our office in Adelaide. Text, email or call your TACSI contact if you require any other assistance.

This guide is a work in progress and we value your feedback to help us improve it.

1. Entrance

We are located on Level 1 at 279 Flinders Street, in Adelaide CBD.

The entrance is between the Ba'hai Centre and Xpresso Café at the back of the car park and is 15m from the pavement.



2. Sloped curb

The nearest sloped curb leads into the car park from Flinders St. The centre of the sloped curb is a shallow gutter.

There is also a sloped curb at the corner of Flinders Street and Daly Street or at the pedestrian crossing on the corners of Flinders Street and Hutt Street.



3. Parking

If you need a parking spot for your visit, let your contact person know and they will make sure the nearest parking spot is available and access is clear on all sides.



4. Access ramp

Ramp access can be found at the back left-hand corner of the car park about 15m from the pavement.



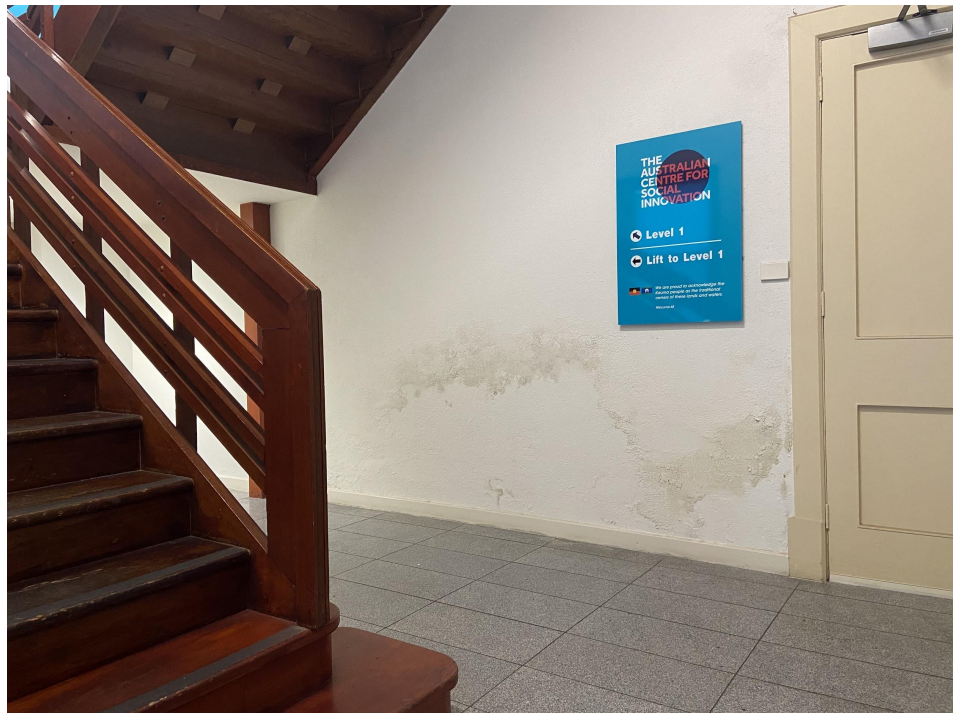
5. Entrance doorway

The entrance is 102cm at its narrowest point. Your contact person will make sure both doors are open before you arrive.



6. Lift access

Access to level 1 is via a lift located behind the staircase to the left as you enter the building.



The lift is 140cm deep by 110cm wide, and the door is 90cm at its narrowest point.



7. Reception

As you exit the lift on the first floor, a gallery landing leads to a hallway and the main office.



Our hallway floors have long carpets, the edges of which are not attached to the floor. The carpets do, however, lie flat and should not be an obstruction.



Proceed towards the double doors at the end of the hall and turn right following signs to any specific rooms or reception.

We currently have a table set up as you enter with a COVID check-in and hand sanitising station.



8. Accessible toilet

We have one all-gender accessible toilet. When you arrive, the staff will let you know where to find the toilet.

There is a small angled ridge leading to the toilet area.

The swing door is heavy, opens straight into the bathroom and is 80cm at its narrowest point.



The bathroom includes the following features:

- support bars
- over toilet seat raiser aid
- large internal door locks
- 'D' shaped door handle

